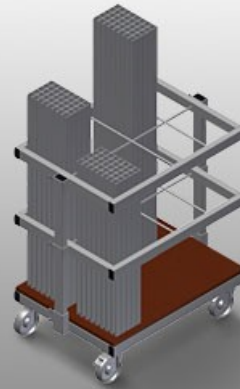




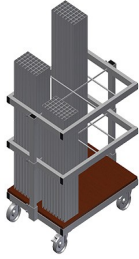
AW800

补强钢筋推车

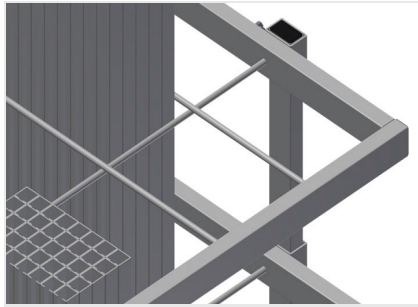


用于对切割完毕的加强型材进行分类存放和运输的推车

- 钢制结构，坚固稳定
- 以垂直式放置和运输钢型材
- 体积小巧
- 长度固定，型材存放状况清晰可见
- 四个转向滚轮，两个带刹车

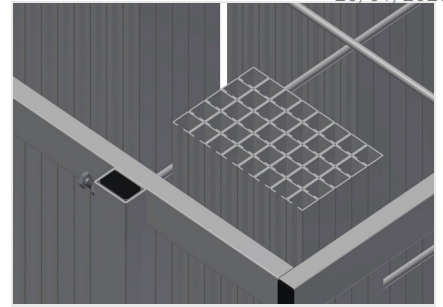


补强钢筋推车AW 800



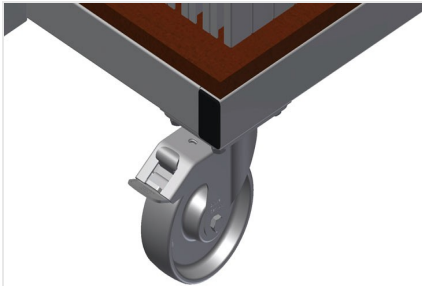
隔层

六个隔层，存放空间大小190 x 265 mm



格子框架

两个格子框架，高度可调



转向滚轮

四个转向滚轮，两个带刹车，实现高机动性并保证轻松、安全的操作





AW 800 / □□□□

- □800 mm
- □600 mm
- □960 mm
- 6□□
- □35 kg
- □□400 kg
- □□□125 mm

