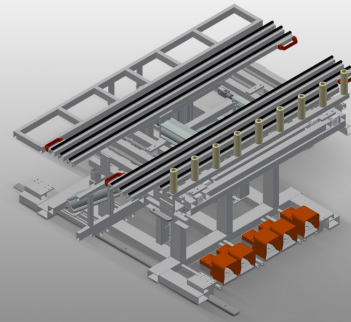




RMT1400

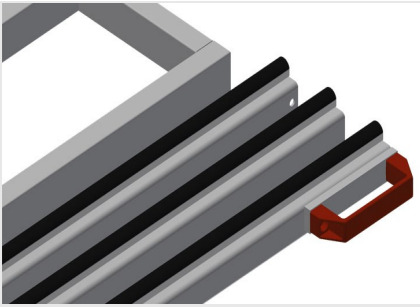
TILTING TABLES



- Stable steel construction
- Tilting assembly table with draw-in unit
- Basic dimensions 1,400 x 2,000 mm, when pulled out 2,000 x 2,800 mm
- Pull-out work platform consisting of two supporting beams, clad with brush strip
- Minimum size of work platform 2,000 x 1,000 mm
- Maximum size of work platform 2,800 x 2,000 mm
- Two supporting beams form a frame, the height of which can be adjusted pneumatically and continuously from 1,000 to 2,000 mm
- Lifting and tilting unit with foot valve
- Fixed roller conveyor with lifting unit, 100 mm
- Lifting unit for transferring / receiving from the roller conveyor
- Roller conveyor open at front for drawing in to transfer roller conveyor
- Mobility unit with flanged rollers and pneumatic fixing brake with operation from side

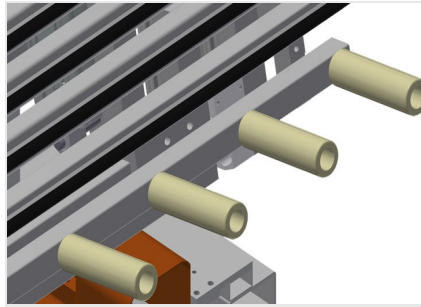
Optional

- Table supporting surface with felt profile strip for RMT 1400
- Auxiliary clamp with hand valve



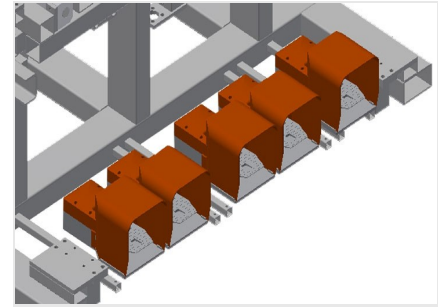
Supporting surface

Table supporting surface with brush strips



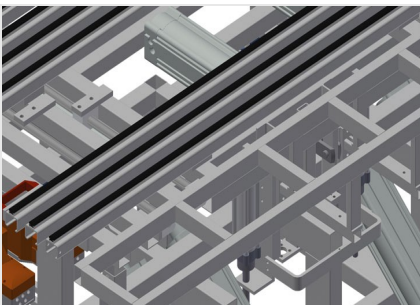
Roller support

Roller conveyor open at front for drawing in to transfer roller conveyor. Fixed roller conveyor with lifting unit, 100 mm Lifting unit for transferring / receiving from the roller conveyor.



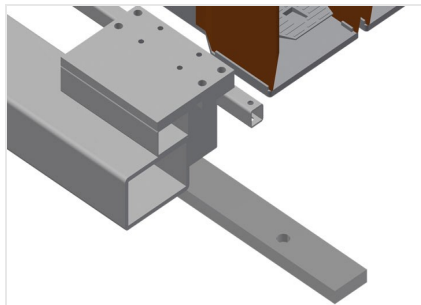
Foot switch

Control via foot valve. Lifting and tilting unit with foot valve



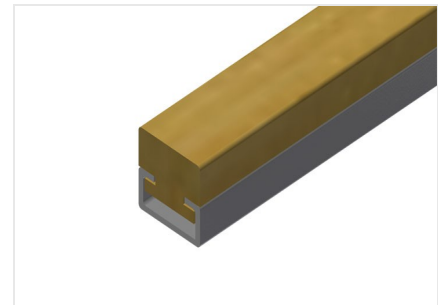
Worktable

Height of support table adjustable to 230 mm below the work surface. Depth of support table 250 mm, length 2,000 mm



Mobility unit

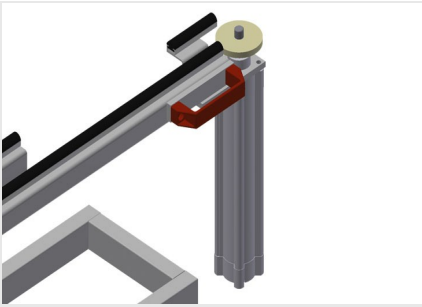
Mobility unit with flanged rollers and pneumatic fixing brake with operation from both sides



Felt strip

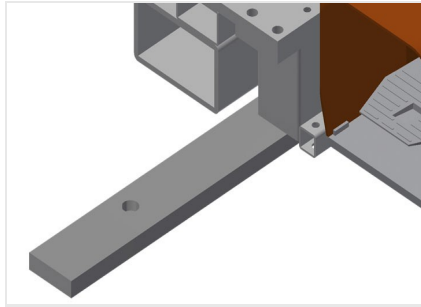
Table supporting surface with felt profile strip for RMT 1400





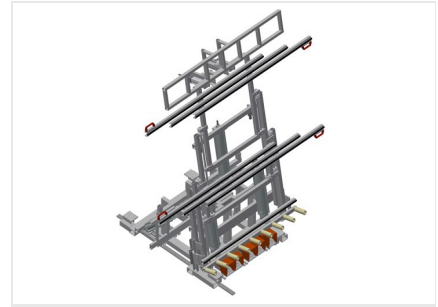
Auxiliary clamp

Auxiliary clamp with hand valve for RMT 1400. Auxiliary clamps provide extra security when machining.



Rail

Rails, 2.0 m, left and right



Tilting assembly table with draw-in unit

Tilting assembly table with draw-in unit for mounting prefabricated roller shutter boxes onto window elements





RMT 1400 / TILTING TABLES

- Working height 950 mm
- Roller conveyor length 1,600 mm
- Roller diameter 50 mm
- Roller length 150 mm
- Tilt of supporting surface 8°
- Depth of support table 200 mm
- Length of support table 2,000 mm
- Weight 450 kg
- Load 300 kg
- Length 2,000 mm
- Width 1,620 mm