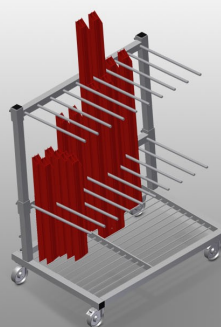


## **PWS1000**

### **PROFILE TRANSPORT TROLLEYS**

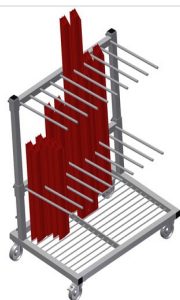


Profile trolley for vertical storage and transportation of profiles

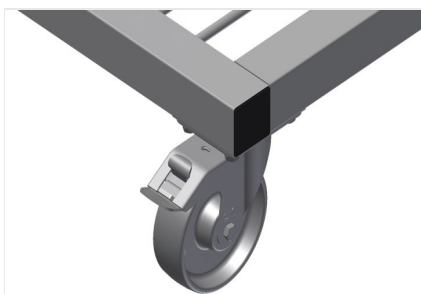
- Stable steel construction
- Vertical profile transportation
- Profile trolley with loading on one side
- Easy loading and unloading
- Sufficient for 30-40 profile bars
- Compartment divider height is adjustable
- Supporting surface with bar grid floor
- Four castors, two of which have a fixing brake

#### **Options**

- Plastic protector for PWS 1000

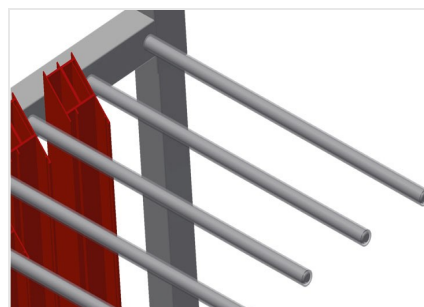


### Profile transport trolley PWS 1000



### Casters

Four casters, two of which have a fixing brake, provide a high degree of mobility and easy, safe handling



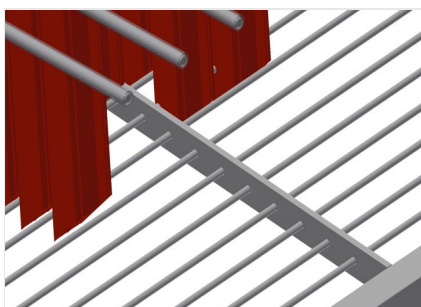
### Compartment dividers

Compartment divider height is adjustable, Compartment width 100 mm, Compartment depth 540 mm



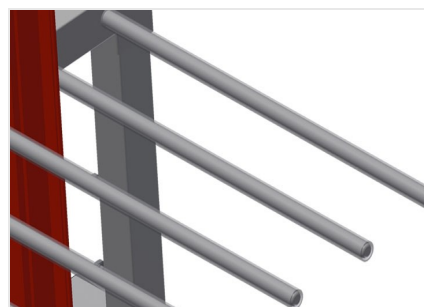
### Easy loading and unloading

Profile trolley with loading on one side



### Supporting surface

Supporting surface with bar grid floor



### Plastic protector for PWS 1000

All supporting surfaces have a non-slip PVC cladding which protects surfaces from damage during storage



### PWS 1000 / PROFILE TRANSPORT TROLLEYS

---

- Length 1,200 mm
- Width 800 mm
- Height 1,360 mm
- Two compartment dividers
- Nine compartments
- Roller diameter 125 mm
- Compartment width 100 mm
- Compartment depth 540 mm
- Unit height 1,150 mm
- Weight 60 kg
- Load 350 kg