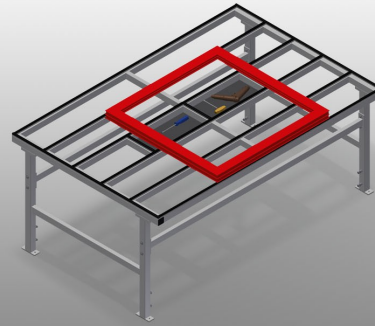




MST2000

HORIZONTAL ASSEMBLY TABLES



Assembly table expandable for all work tasks on frames and sashes

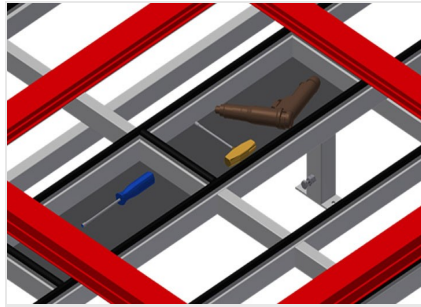
- Stable steel construction
- Assembly table for all work tasks on frames and sashes
- Horizontal frame transportation
- Storage tray for setting down tools and accessories
- Adjustable height
- Table supporting surface with plastic slide bars
- Simple installation with a modular system design

Options

- Also available with brush strips on request
- Also available with felt strips on request (for wooden profiles)
- Also available with rubber strips on request (for aluminium profiles)
- 4-fold compressed air supply



Sliding table MST 2000



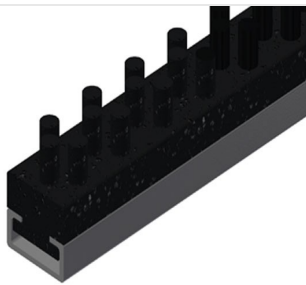
Storage tray

Storage tray for setting down tools and accessories



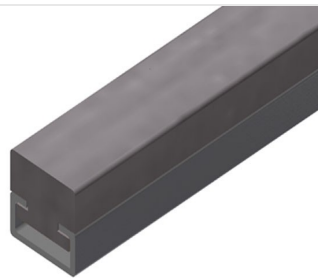
Height adjustment

Adjustable height; working height can be set to 850 – 1,000 mm by means of adjustable feet



Brush strip

Supporting surfaces with brush strip



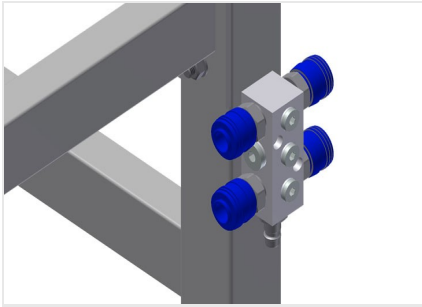
Felt strip

Supporting surfaces with felt strip



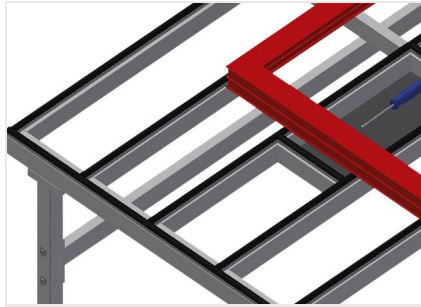
Rubber strips

Supporting surfaces with rubber-knob profile



4-fold compressed air connection

4-fold compressed air connection for connecting compressed-air tools



Supporting surfaces

Supporting surfaces with plastic slide bars





MST 2000 / HORIZONTAL ASSEMBLY TABLES

- Length 2,000 mm
- Height 850 - 1,000 mm
- Width 1,300 mm
- Weight 90 kg