



### **HT1000**

#### **HORIZONTAL ASSEMBLY TABLES**



Modular work table for a production line (basic module)

- Stable steel construction
- Universal system of work tables for lines with a continuous production flow
- Modular system – basic module + additional module
- Add-on elements for individualised expansion
- Additional modules are easy to install
- Versatile work table for all applications: for example, as an individual table in the production flow, as an in-line workstation for assembly work, as a work table for gasket insertion, for the post-processing of special-order production items or as a buffer zone
- Table supporting surface with plastic slide bars
- Adjustable height
- Simple installation with a modular system design

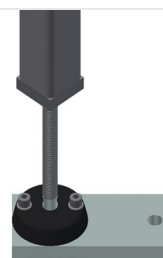


### Horizontal table - Individual table HT 1000 E



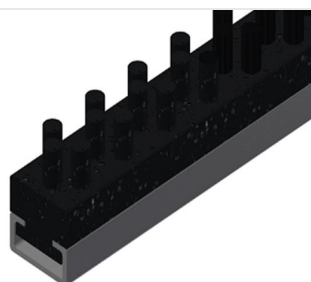
### Storage tray

Storage tray for setting down tools and accessories



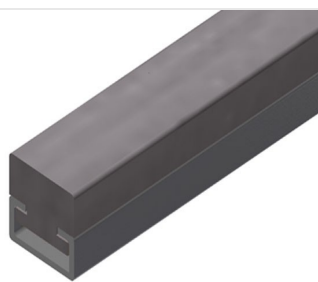
### Height adjustment

Adjustable height. Working height can be set to 850 - 1,000 mm by means of adjustable feet



### Brush strip

Supporting surfaces with brush strip for HT 1000



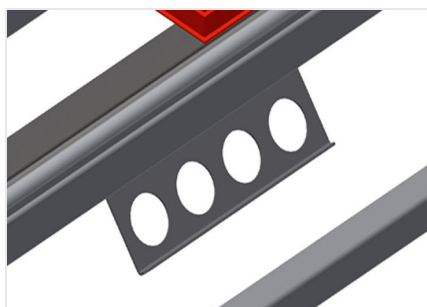
### Felt strip

Supporting surfaces with felt strip for HT 1000



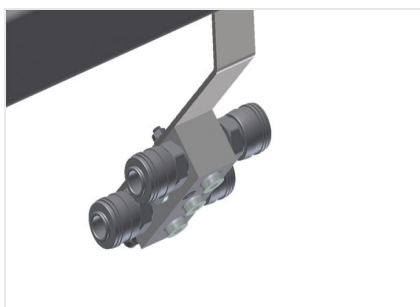
### Supporting surfaces

Supporting surfaces with plastic slide bars



## Tool rack

Tool rack for pneumatic or electrical tools



## 4-fold compressed air connection

4-fold compressed air connection for connecting compressed-air tools



## Rubber strips

Supporting surfaces with rubber-knob profile for aluminium elements



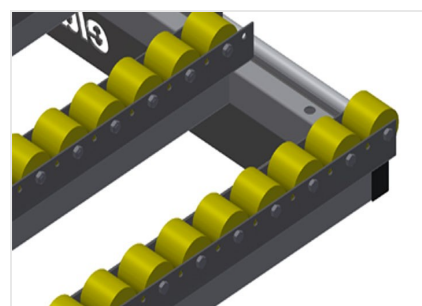
## End rack

End rack for HT 1000



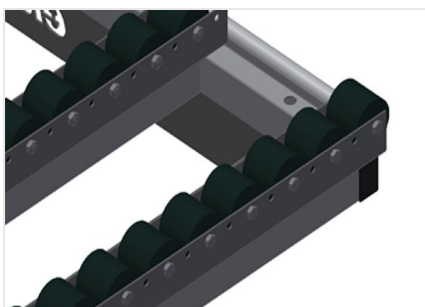
## End strip with knob profile

End strip with knob profile for HT 1000



## Roller support, cmpl., for HT 1000/Alum.

Plastic rollers with polyurethane coating, on ball bearings, load per roller: 40 kg, convenient for transport and handling of aluminium elements



## Roller support, compl., for HT 1000/PVC

Hard plastic rollers with polyamide coating,  
on plain bearingsLoad per roller: 60 kg,  
convenient for transport and handling of  
PVC elements



### HT 1000 / HORIZONTAL ASSEMBLY TABLES

---

- Length 1,000 mm
- Height 850 - 1,000 mm
- Width 1,300 mm
- Weight 60 kg