



## **AW1100**

### **REINFORCEMENT TROLLEYS**



Rack for providing a sorted selection of cut-to-length reinforcement profiles

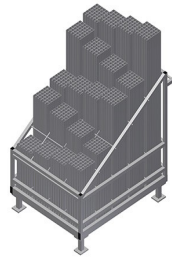
- Stable steel construction
- Vertical storage of steel profiles
- Compact outside dimensions
- Well-organised arrangement of fixed-length profiles
- Transportable with forklift truck

#### **Option**

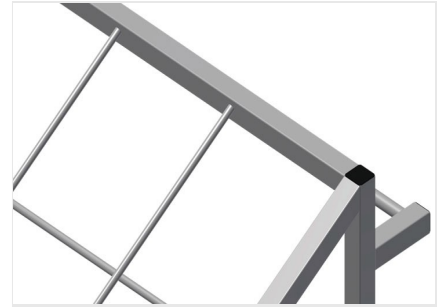
- Mobile as trolley on request – castors compl.



**Reinforcement trolley AW 1100**

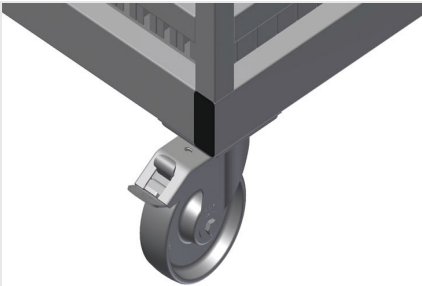


**Reinforcement trolley AW 1100**



**Compartments**

20 compartments, 200 x 200 mm



**Casters, cmpl.**

Two casters with brake and two fixed rollers provide mobility in all directions, roller diameter 125 mm



### AW 1100 / REINFORCEMENT TROLLEYS

---

- Length 1,100 mm
- Width 900 mm
- Height 1,100 mm
- 20 Compartments
- Weight 80 kg
- Load 600 kg