



RFR

Rack systems



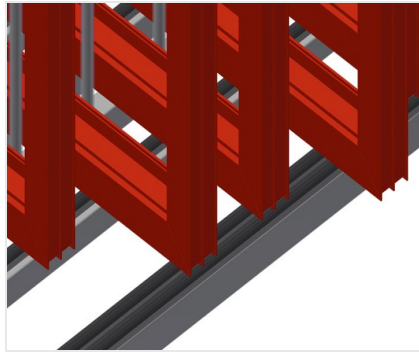
Rack for storage of frame elements. Stable steel construction. Rack for storage of frames. The individual elements are available for direct access. Specially designed for integration in assembly lines. Access is possible from both sides. Floor support equipped with knob profile. Compartment separating bars covered with protective tubing.

RFR 10/01 - RFR 10/02: Supporting surface with rollers for even easier loading and unloading.



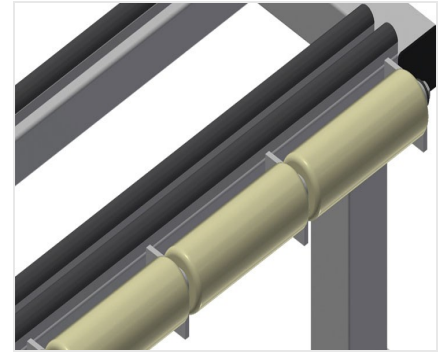
Compartments

All supporting surfaces have a non-slip PVC cladding which protects surfaces from damage during storage



Supports

Lower supporting surfaces with knob profile to protect profiles from damage



Rollers

RFR 10/01 / RFR 10/02

Rollers are mounted to every compartment for even easier loading and unloading of heavy or large elements



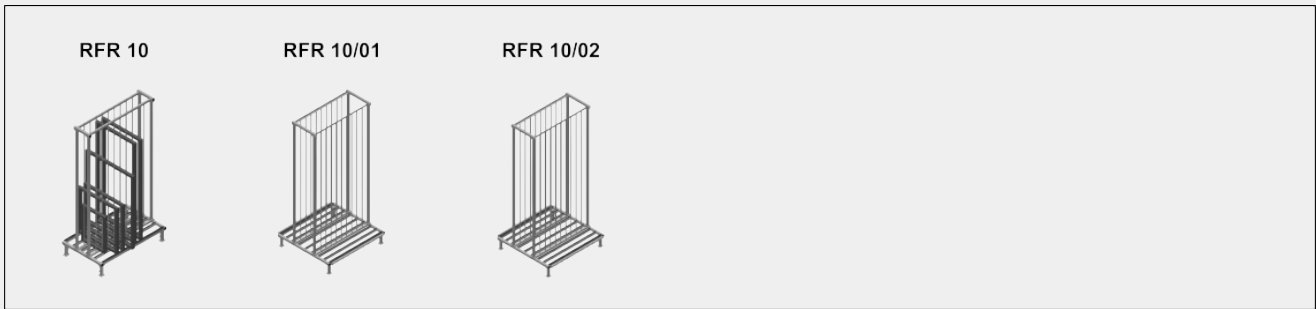
Casters, compl. RFR 10

Two casters with brake and two fixed rollers provide mobility in all directions, roller diameter 125 mm





MODELS



DIMENSION AND WEIGHT

RFR 10 / RFR 10/01 / RFR 10/02

Length (mm)	<input type="radio"/>
Width (mm)	<input type="radio"/>
Height (mm)	<input type="radio"/>
Weight (kg)	<input type="radio"/>

STORAGE CAPACITY

RFR 10 / RFR 10/01 / RFR 10/02

Compartments	<input type="radio"/>
Compartment width (mm)	<input type="radio"/>
Compartment height (mm)	<input type="radio"/>
Load capacity (kg)	<input type="radio"/>

CHARACTERISTICS

Floor support equipped with knob profile	<input checked="" type="radio"/>
Compartment separating bars covered with protective tubing	<input checked="" type="radio"/>
RFR 10	
Rollers and handle	<input type="radio"/>
RFR 10/01 / RFR 10/02	
Supporting surface with rollers	<input checked="" type="radio"/>

Included ● Available ○