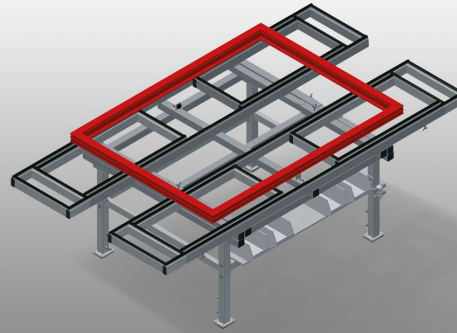




### MTA3000

#### HORIZONTAL ASSEMBLY TABLES

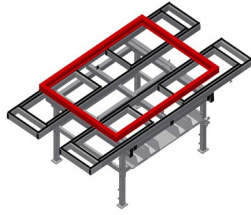


Assembly table expandable for all work tasks on frames and sashes

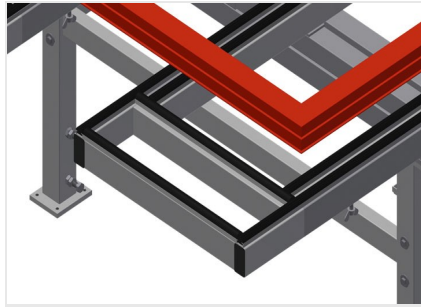
- Stable steel construction
- Universal assembly table
- Pull-outs on four sides
- Ideal for large elements
- Adjustable height
- Table supporting surface with plastic slide bars
- Practical storage area under the table surface
- Four PVC containers for small accessories, hardware and screws
- 4-fold compressed air supply
- Simple installation with a modular system design

#### Options

- Also available with brush strips on request
- Also available with felt strips on request (for wooden profiles)
- Also available with rubber strips on request (for aluminium profiles)
- Castors, cmpl.

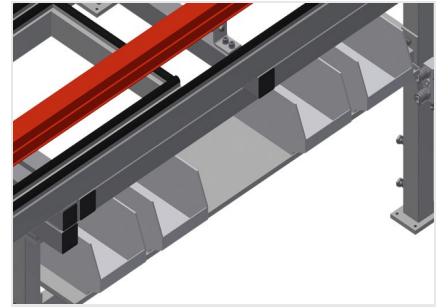


### Assembly table MTA 3000



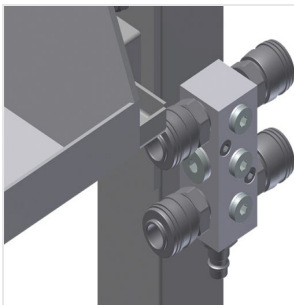
### Supporting surfaces

Supporting surfaces with plastic slide bars



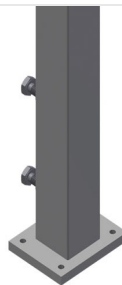
### Storage area

Practical storage area under the table surface with 4 PVC containers for small accessories, hardware and screws



### 4-fold compressed air connection

4-fold compressed air connection for connecting compressed-air tools



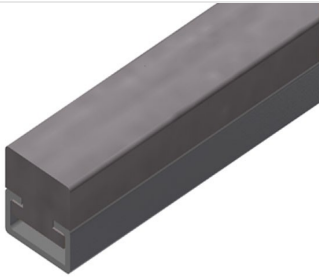
### Height adjustment

Adjustable height; working height can be set to 850 - 1,000 mm by means of adjustable feet



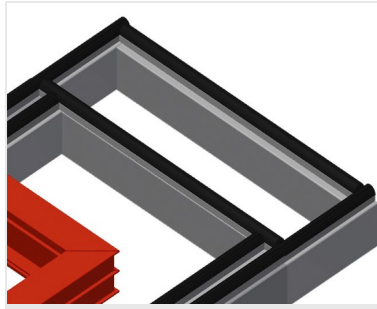
### Brush strip

Supporting surfaces with brush strip



### Felt strip

Supporting surfaces with felt strip



### Rubber strips

Supporting surfaces with rubber-knob profile



### Castors, cmpl.

Two castors with brake and two fixed rollers provide mobility in all directions



**MTA 3000 / HORIZONTAL ASSEMBLY TABLES**

---

- Length 2,400 - 4,000 mm
- Width 1,300 - 1,900 mm
- Height 850 - 1,000 mm
- Weight 160 kg