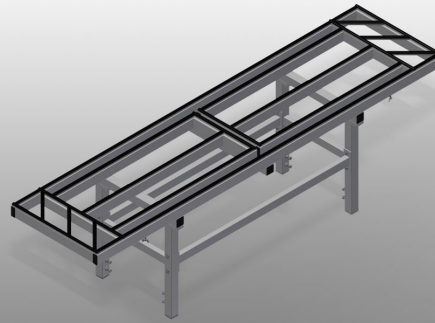




MSA2400

ASSEMBLY STANDS



Assembly station for all assembly tasks on special-order elements and curtain walls

- Stable steel construction
- Assembly table for all assembly tasks on special-order elements and curtain walls
- Pull-outs on two sides
- Assembly table is ideal for the assembly of larger elements
- The narrow design of the machine base provides good accessibility to the elements from all sides
- The assembly table is mobile
- Supporting surfaces with rubber profile
- The tables can be adapted to suit the elements optimally due to a large adjustment range of the supporting surfaces, i.e. by pulling out the supports and shifting the tables

Options

- Flanged rollers, cmpl., for MSA 2400 - Assembly lines
- Rail, 2.0 m, left and right
- Castors, cmpl., for MSA 2400 - Stand alone
- 4-fold compressed air supply
- Storage area, cmpl., for MSA 2400

Variants for assembly lines

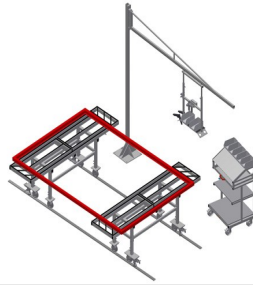
- The rails, once adjusted to be level, provide a level supporting surface on which the tables can be moved.
- The tables can be moved and easily positioned on the rails.
- Two or more tables can be combined to enlarge the supporting surface to any extent desired.
- The tables are ideal for the assembly of large elements.
- When the tables are not needed, they can be pushed together and moved aside.
- There are supports with a parallelogram shape at the edges to allow profiles to be set down longitudinally

Stand-alone variants

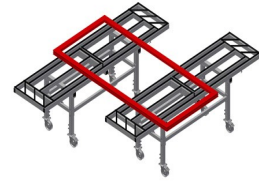
- The narrow design of the machine base provides good accessibility to the elements from all sides
- A larger work area of the supporting surface can be achieved by pulling out the parallelogram-shaped supports
- The tables can be moved and easily positioned on castors
- Two tables can be combined to enlarge the supporting surface to any extent desired
- The tables are ideal for the assembly of large elements



Assembly station MSA 2400



Pair of assembly stations MSA 2400 + G 3000 + S 3000 + WKW 800

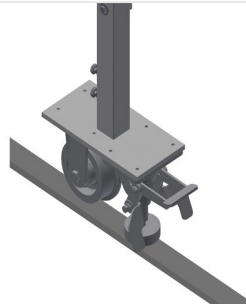


Pair of assembly stations MSA 2400



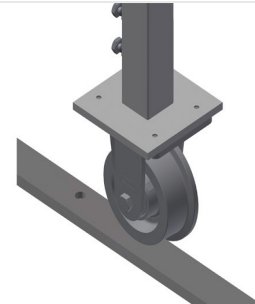
Supports

Supporting surfaces with rubber profile. The supports at the edges have a parallelogram shape to allow profiles to be set down longitudinally. Pull-out supports on the side: 900 mm



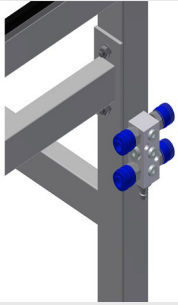
Flanged rollers, compl.

Mobility unit with four flanged rollers and two fixing brakes



Rails

Rails, 2.0 m, left and right



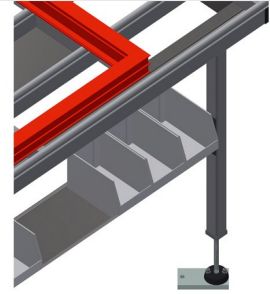
4-fold compressed air connection

4-fold compressed air connection for connecting compressed-air tools



Supporting surfaces

Supporting surfaces equipped with rubber profile to protect profiles from damage



Storage area

Storage area with four plastic trays for small accessories, hardware and screws



Casters, compl.

Two casters with brake and two fixed rollers provide mobility in all directions



MSA 2400 / ASSEMBLY STANDS

- Length 2,400 mm
- Width 600 mm
- Height 850 - 1,000 mm
- Supporting surface 600 x 2,400 mm
- Pulled out 600 x 4,200 mm
- Weight 80 kg
- Load 600 kg