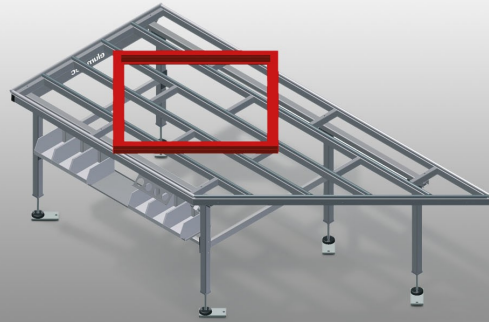




HT2045

HORIZONTAL ASSEMBLY TABLES



Horizontal table for all work tasks on frames and sashes

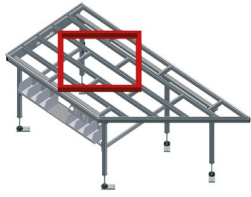
- Stable steel construction
- Angled work table; can be used as a pass-through in the production line or as a buffer zone
- Assembly table for all work tasks on frames and sashes
- Table supporting surface with plastic slide bars
- Storage tray for setting down tools and accessories
- Adjustable height
- Simple installation with a modular system design

Options

- Also available with brush strips on request
- Also available with felt strips on request (for wooden elements)
- Also available with rubber strips on request (for aluminium elements)
- Roller support
- Tool rack
- 4-fold compressed air supply
- Storage area with six plastic trays
- Parallelogram support, compl., for 90°
- Triangular support, compl., for in-line use

HORIZONTAL TABLE - RIGHT TABLE, 45° HT 2045 R

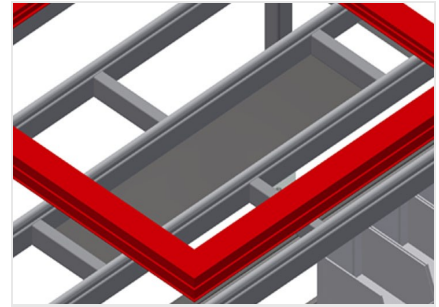
See Left table, 45° HT 2045 L



Horizontal table - Left table, 45° HT 2045

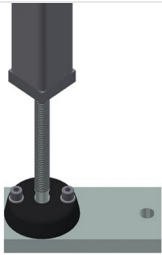


Horizontal table - Right table, 45° HT 2045



Storage tray

Storage tray for setting down tools and accessories



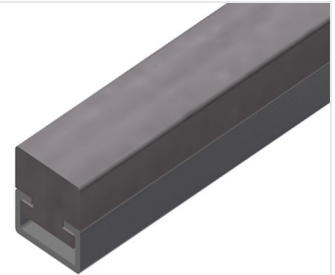
Height adjustment

Adjustable height, working height can be set to 850 - 1,000 mm by means of adjustable feet



Brush strip

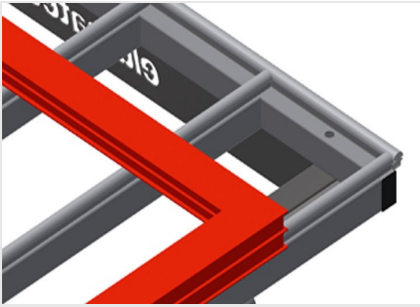
Supporting surfaces with brush strip



Felt strip

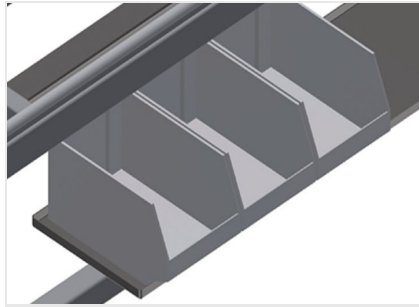
Supporting surfaces with felt profile strip





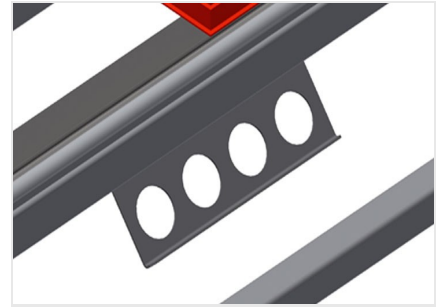
Supporting surfaces

Supporting surfaces with plastic slide bars



Storage area

Storage area with six plastic trays for small accessories, hardware and screws



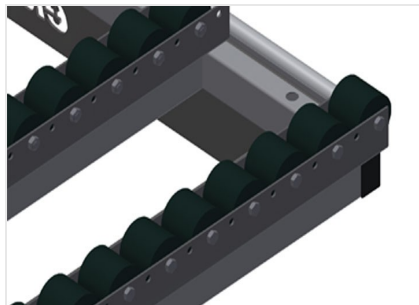
Tool rack

Tool rack for pneumatic or electrical tools



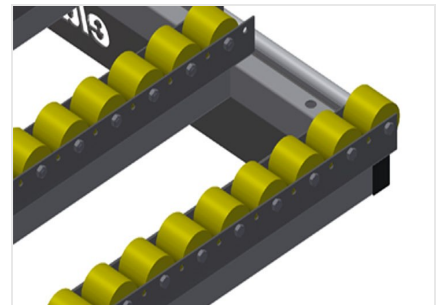
4-fold compressed air connection

4-fold compressed air connection for connecting compressed-air tools



Roller support, cmpl., for HT 2045/PVC

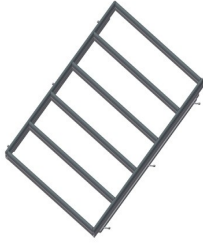
Hard plastic rollers with polyamide coating, on plain bearings, load per roller: 60 kg, convenient for transport and handling of PVC elements



Roller support, cmpl., for HT 2045/Alum.

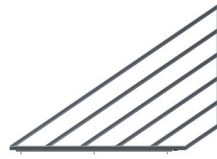
Plastic rollers with polyurethane coating, on ball bearings, load per roller: 40 kg, convenient for transport and handling of aluminium elements





Parallelogram support, cmpl., for 90°

Table supporting surface brush strip, Table supporting surface felt profile strip, Table supporting surface rubber-knob profile, Roller support, cmpl. for PVC, Rubber roller support cmpl. for Alum.



Triangle support, cmpl., for in-line use

Supporting surface brush strip, Supporting surface felt profilestrip, Supporting surface rubber-knob profile, Roller support, cmpl. for PVC, Rubber roller support cmpl. for Alum.



HT 2045 / HORIZONTAL ASSEMBLY TABLES

- Length 2,850 mm
- Height 850 - 1,000 mm
- Width 1,300 mm
- Weight 100 kg