



### HT1000

#### HORIZONTAL ASSEMBLY TABLES



Horizontal table for all work tasks on frames and sashes

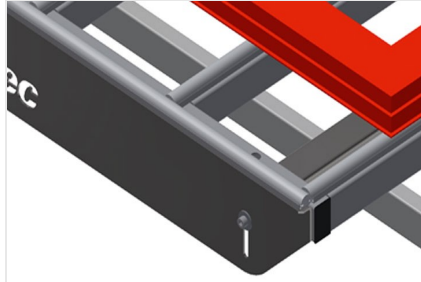
- Stable steel construction
- Table supporting surface with plastic slide bars
- Storage tray for setting down tools and accessories
- Adjustable height
- Simple installation with a modular system design

#### Options

- Also available with brush strips on request
- Also available with felt strips on request (for wooden elements)
- Also available with rubber strips on request (for aluminium elements)
- Roller support
- Tool rack
- 4-fold compressed air supply

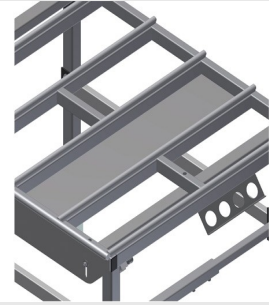


### Horizontal table - Individual table HT 1000



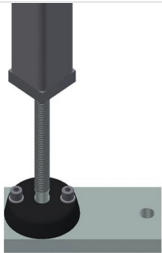
### Supporting surfaces

Supporting surfaces with plastic slide bars



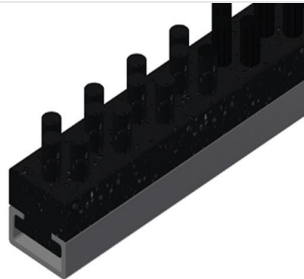
### Storage tray

Storage tray for setting down tools and accessories



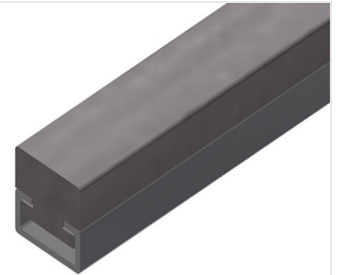
### Height adjustment

Adjustable height; working height can be set to 850 - 1,000 mm by means of adjustable feet



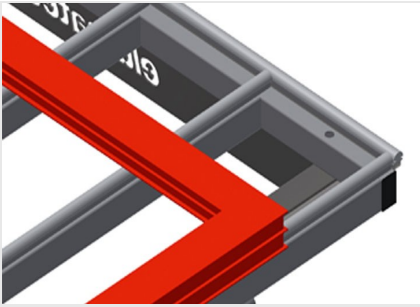
### Brush strip

Supporting surfaces with brush strip for HT 1000



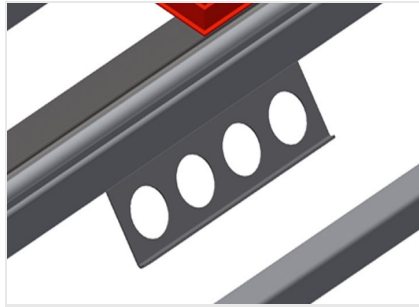
### Felt strip

Supporting surfaces with felt strip for HT 1000



### Rubber strips

Supporting surfaces with rubber-knob profile for aluminium elements



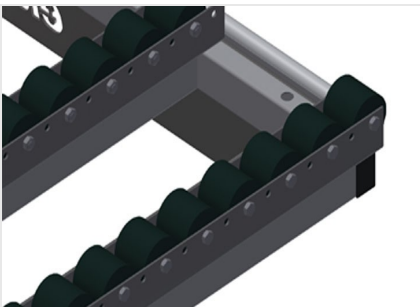
### Tool rack

Tool rack for pneumatic or electrical tools



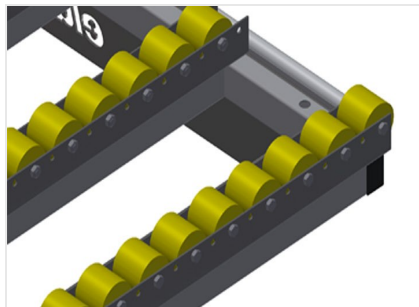
### 4-fold compressed air connection

4-fold compressed air connection for connecting compressed-air tools



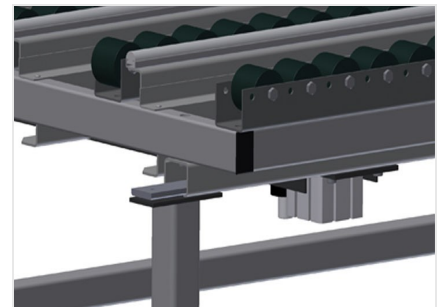
### Roller support, cmpl., for HT 1000/PVC

Hard plastic rollers with polyamide coating, on plain bearings, load per roller: 60 kg, convenient for transport and handling of PVC elements



### Rubber roller support, cmpl., for HT 1000/Alum.

Plastic rollers with polyurethane coating, on ball bearings, load per roller: 40 kg, convenient for transport and handling of aluminium elements



### Pneumatic lifting unit

Lifting unit L = 1,000 mm





### HT 1000 / HORIZONTAL ASSEMBLY TABLES

---

- Length 1,000 mm
- Width 1,300 mm
- Height 850 - 1,000 mm
- Weight 70 kg