



HT1000

HORIZONTAL ASSEMBLY TABLES

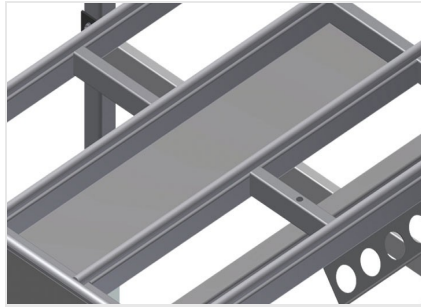


Modular work table for a production line (basic module)

- Stable steel construction
- Universal system of work tables for lines with a continuous production flow
- Modular system - basic module + additional module
- Add-on elements for individualised expansion
- Additional modules are easy to install
- Versatile work table for all applications: for example, as an individual table in the production flow, as an in-line workstation for assembly work, as a work table for gasket insertion, for the post-processing of special-order production items or as a buffer zone
- Table supporting surface with plastic slide bars
- Adjustable height
- Simple installation with a modular system design

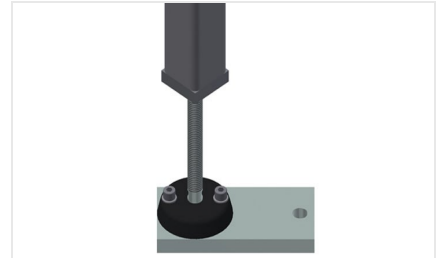


Horizontal table - Individual table HT 1000 E



Storage tray

Storage tray for setting down tools and accessories



Height adjustment

Adjustable height. Working height can be set to 850 - 1.000 mm by means of adjustable feet



Brush strip

Supporting surfaces with brush strip for HT 1000



Felt strip

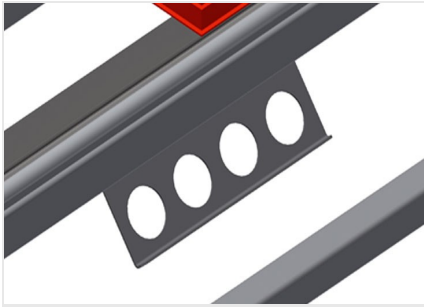
Supporting surfaces with felt strip for HT 1000



Supporting surfaces

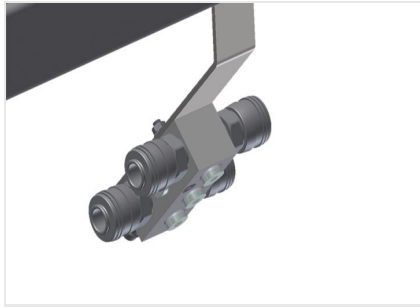
Supporting surfaces with plastic slide bars





Tool rack

Tool rack for pneumatic or electrical tools



4-fold compressed air connection

4-fold compressed air connection for connecting compressed-air tools



Rubber strips

Supporting surfaces with rubber-knob profile for aluminium elements



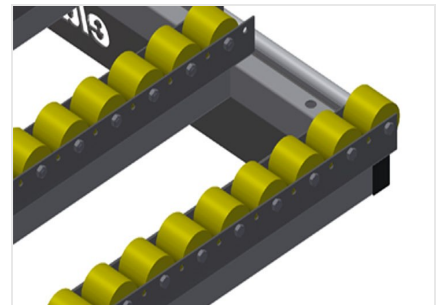
End rack

End rack for HT 1000



End strip with knob profile

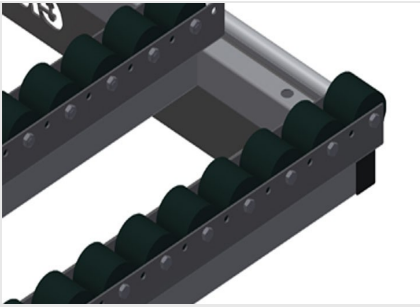
End strip with knob profile for HT 1000



Roller support, cmpl., for HT 1000/Alum.

Plastic rollers with polyurethane coating, on ball bearings, load per roller: 40 kg, convenient for transport and handling of aluminium elements





Roller support, compl., for HT 1000/PVC

Hard plastic rollers with polyamide coating,
on plain bearings Load per roller: 60 kg,
convenient for transport and handling of
PVC elements





HT 1000 / HORIZONTAL ASSEMBLY TABLES

- Length 1,000 mm
- Height 850 - 1,000 mm
- Width 1,300 mm
- Weight 60 kg