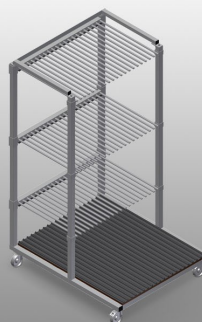




GF1000

GLASS
COMPARTMENT/GLAZING
BEAD TROLLEYS

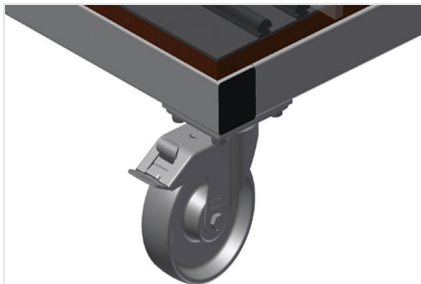


Glass transport trolley with sorting rack

- Stable steel construction
- Ideal for sorting glass
- Hardwood supporting surface with felt
- Compartment dividers for 20 sheets of glass
- Compartment dividers height is adjustable
- Four castors, two of which have a fixing brake

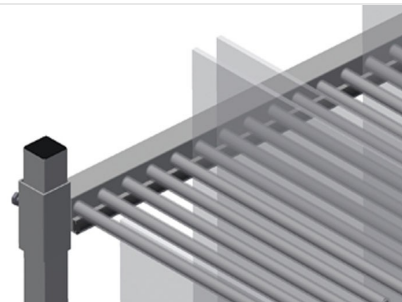


Glass compartment trolley GF 1000



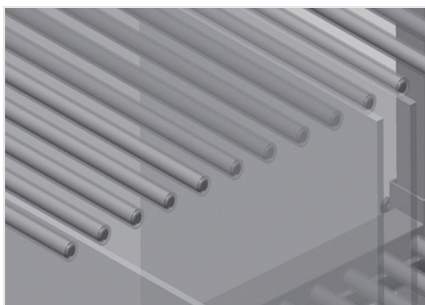
Casters

Four casters, two of which have a fixing brake, provide a high degree of mobility and easy, safe handling



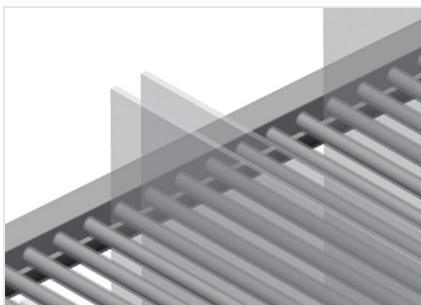
Compartment divider with plastic protection

Compartment divider height is adjustable. All supporting surfaces have a non-slip PVC cladding which protects sheets of glass from damage during storage



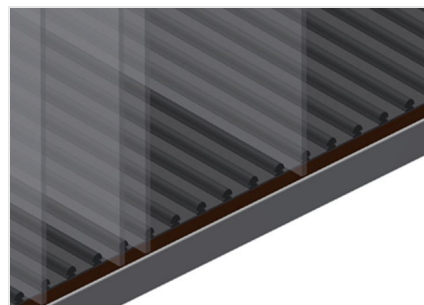
Easy loading and unloading

Well-organised storage provides quick access



Back support with rubber strips

Rear supporting surfaces equipped with rubber strips protect sheets of glass from damage



Bottom supporting surface of wood with felt

Lower supporting surface covered with felt. Additional plastic strips on the floor



GF 1000 / GLASS COMPARTMENT/GLAZING BEAD TROLLEYS

- Length 1,180 mm
- Width 850 mm
- Height 1,360 mm
- 20 compartments
- Clearance 30 mm
- Weight 95 kg
- Load 400 kg
- Roller diameter 125 mm