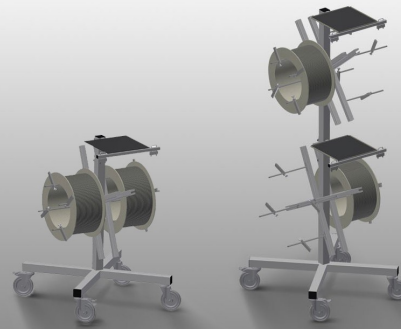


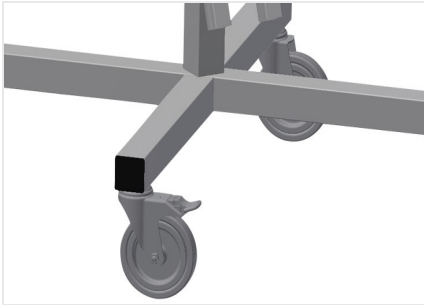


*DW*

Gasket trolleys

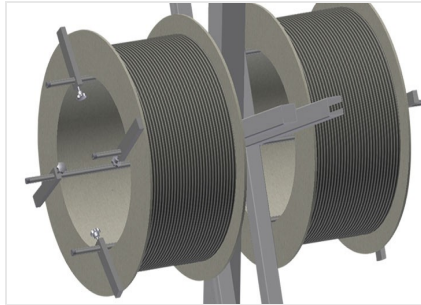


Gasket trolley for gasket reels. Stable steel construction. 2/4 reel mounts, according to model. Indispensable for gasket insertion. Adjustable for any reel diameter. Tool tray. Four swivel castors, two of which with locking stop.



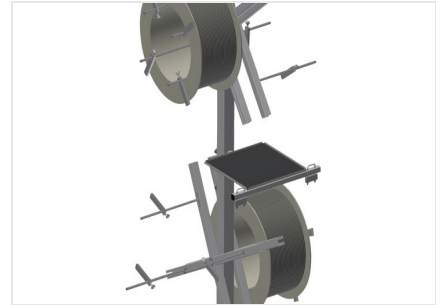
### Casters

Four casters, two of which have a fixing brake, provide a high degree of mobility and easy, safe handling



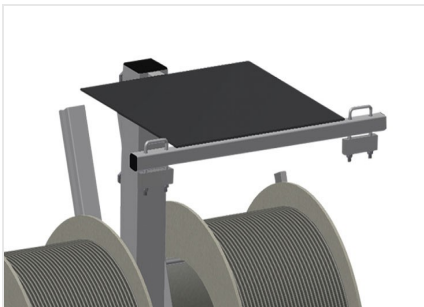
### Reel mounts DW 2

For two gasket reels. Mounts adjustable for any reel size.



### Reel mounts DW 4

For four gasket reels. Mounts adjustable for any reel size.



### Storage area for tools

Practical tool tray located at working height



### Unwinding brake

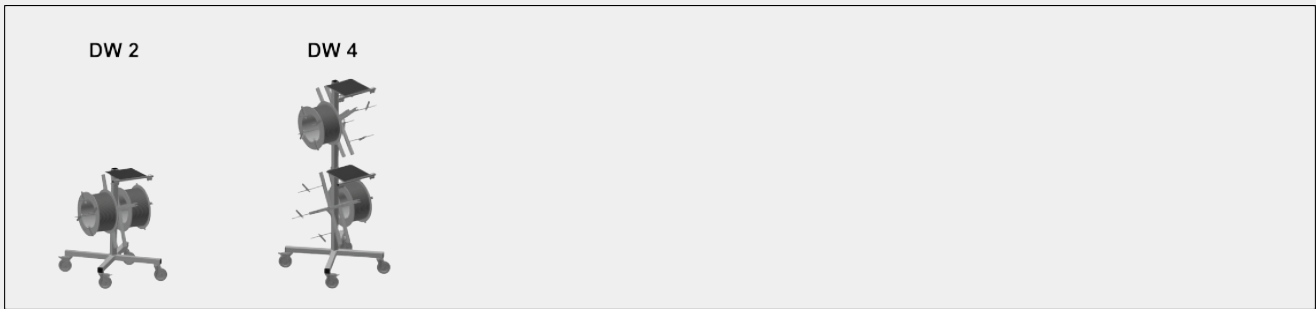
Unwinding brake for each reel





### DW / GASKET TROLLEYS

#### MODELS



#### DIMENSION AND WEIGHT

##### DW 2 / DW 4

Length (mm)	<input type="radio"/>
Width (mm)	<input type="radio"/>
Height (mm)	<input type="radio"/>
Weight (kg)	<input type="radio"/>

#### CHARACTERISTICS

##### DW 2 / DW 4

Reel holder	<input type="radio"/>
Maximum reel diameter (mm)	<input type="radio"/>
Maximum reel width (mm)	<input type="radio"/>
Swivel castors	<input type="radio"/>
Swivel castors with locking stop	<input type="radio"/>
Swivel castors diameter (mm)	<input type="radio"/>

Included ● Available ○