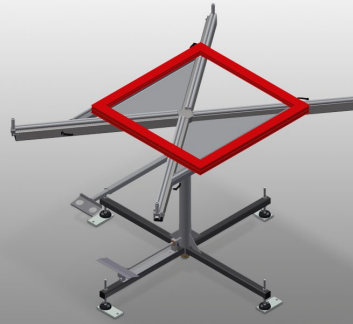




DT1000

ROTATING TABLES



Rotating table for all work tasks on frames and sashes

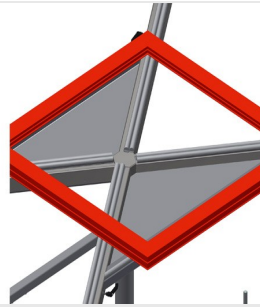
- Stable steel construction
- Rotating work table
- Versatile work table for all applications, e.g. for assembly tasks, as a work table for gasket insertion, for the post-processing of special-order production items, for hardware assembly as well as for final assembly
- Four continuously adjustable pull-out support arms
- Support arms are rubber coated
- Table surface can be rotated 360° and locked using pedal
- With practical storage tray and practical tool tray

Options

- Also available with felt surfaces on request (for wooden profiles)



Rotating table DT 1000



Storage area

Practical storage for small accessories, hardware and screws



Supporting surfaces

Support arms are rubber coated



Support arms

Four pivoting and continuously adjustable pull-out support arms



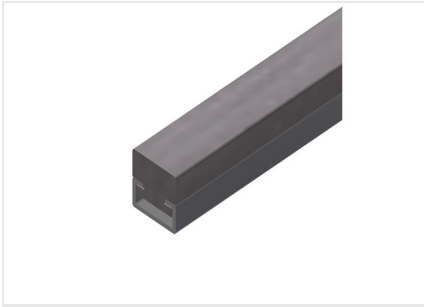
Tool rack

Tool rack for pneumatic or electrical tools



Pedal brake

Table surface can be rotated 360°; foot brake for locking the rotation



Felt strip

Felt strip for DT 1000 (woodworking)





DT 1000 / ROTATING TABLES

- Length of the arms 700 - 1,000 mm
- Height 900 mm
- Weight 110 kg

